

502 Southwest Lakota Avenue
Port St. Lucie, FL 34953

PRICE \$365,000



Single Family



2681 SQFT



4 Beds



3 Baths



2 Car

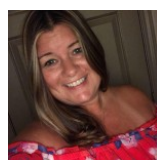


10 SQFT

PROPERTY DETAILS

Ooohhhh!! I've got a good one for you today! I'm going to run out of space before I get to tell you all of the amazing features here! This 2-level home has 4 bedrooms, with the 4th bedroom also suitable for a formal dining room, office, or den. Dual master suites, one upstairs and one down. Open floor plan with 18" tile in all living areas. The granite kitchen was upgraded with black stainless appliances in 2017 (fridge 2020). In 2017, the owners added gutters and replaced the A/C system, along with adding Paradise Platinum Protection Series double-lock IMPACT WINDOWS. The windows even tilt in for easy cleaning! Plenty of space for social distancing here with a huge second living room upstairs. This massive home has room for everyone to have their own chill space.

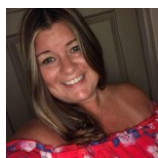
Enjoy your morning coffee on the covered and screened lanai, or refresh yourself with a morning swim in your inground pool with heated spa. There's no "shutting down the pool for winter", as this pool has a gas heater for year-round use! The master bedroom has a cabana door outside, so no tracking water through the house to use the bathroom! Sitting on the patio, you just can't deny the relaxing feeling of living the Florida lifestyle. The yard is surrounded by a privacy fence with a double gate large enough to pull a truck through to access the back yard. This home is perfectly designed for people that like to entertain. When I asked the Seller what they'd miss the most, they said the 360 degree view of the fireworks on 4th of July (while sitting on the roof) is one of their most cherished memories. Whether you have a huge family, in-laws moving in, a teen that needs



Tammy Eiseman
772-224-4522
teiseman@bellsouth.net



more space, or you just like a spacious home, we've got it all covered for you here. Oh, and a big house needs plenty of parking, so in addition to the 2-car garage, there is a paver driveway that also curves to the left for added space. As this family downsizes, they are hoping I can quickly find the perfect Buyer match to make new memories in this wonderful home. Is that you? Or maybe someone you know? Pictures just don't do it justice. Call and schedule your private showing today!



Tammy Eiseman
772-224-4522
teiseman@bellsouth.net

