

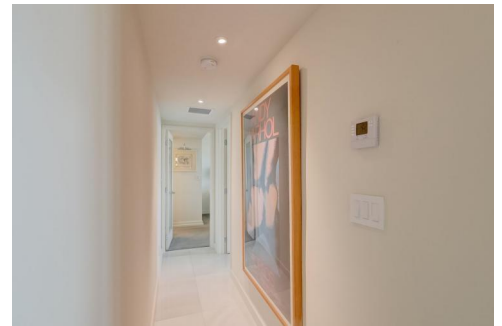
1708

Fort Lauderdale, FL 33308

COMMUNITY: Coral Ridge Towers Original

MLS # F10259330

PRICE \$435,000



Other



1400 SQFT



3 Beds



2 Baths

PROPERTY DETAILS

Meticulously and completely renovated throughout, this corner penthouse offers stunning Central Park like views over Bermuda Riviera and up the coast of Ft Lauderdale's famous beaches. The professionally designed kitchen is well appointed with GE Profile induction cook-top, Advantium speed cook microwave oven, Samsung Family Hub stainless steel four door refrigerator and Bosch dishwasher. The light ash wood grain custom cabinetry with its many pullouts and well planned storage makes it easy to navigate and manage. Both baths are contemporary in design with specially treated frameless glass shower panels that prevent water spots. The bedrooms are very spacious and the guest bedroom has a custom built-in murphy bed. Coral ridge Towers is a 55+, Co-Op and cash terms apply.



Jeffery Burnell

954-298-5000

jburnell@dwelldwelling.com

<https://www.dwellresidential.com>